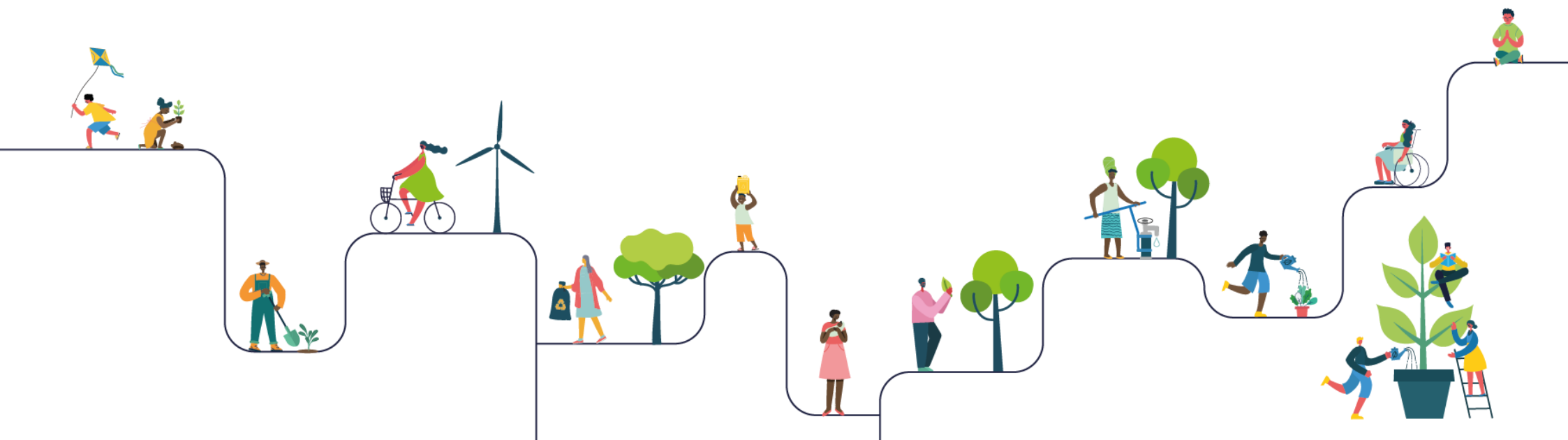


LiveSimply

NAME OF SCHOOL : HOLY CROSS CATHOLIC HIGH SCHOOL
CONTACT NAME : LINDA WALMSLEY



The **Live**Simply action planning form

Please refer to the **LiveSimply** action planning guide for details on how to fill out this planning document.

GLOBAL	<p>Description of action:</p> <p>MAIN ACTION</p> <p>We will organise a campaign in association with Mary's Meals to collect resources and raise funds to support their work.</p> <p>Faith Input:</p> <p>Catholic Social Teaching – the preferential option for the poor, solidarity, human dignity.</p> <p>Feeding the hungry (the parable of the sheep and goats).</p> <p>Education input:</p> <p>We will invite Mary's Meals to come into school and we will also contact other Catholic schools and parishes to encourage them to do the same - then we could have a town-wide collection.</p>	<p>Description of action:</p> <p>We will take part in the International Day of Peace (21 Sept 2023).</p> <p>Faith Input:</p> <p>Living in solidarity</p> <p>https://cafod.org.uk/education/secondary-and-youth-resources/peace-liturgy</p> <p>Education input:</p> <p>Pupils will prepare a prayer service to use throughout the school in tutor groups on September 21.</p>	<p>Description of action:</p> <p>We will take part in Campaign action to show solidarity with our global family. We will send cards to Palestine at Easter/Christmas as part of the Liverpool Justice and Peace Commission to show others they are not forgotten and that we care. This can be done in RE lessons and/or tutor time.</p> <p>https://jp.liverpoolcatholic.org.uk/resources/cards/</p> <p>Faith Input:</p> <p>Living in Solidarity</p> <p>Education input:</p> <p>Use assembly and lesson times to look at the conflict in the Holy Land (RE/Geography/History)</p> <p>Shifting Perspectives - The Holy Land resources</p> <p>https://cafod.org.uk/education/secondary-and-youth-resources/sixth-form-resources</p>
LOCAL	<p>Description of action:</p> <p>MAIN ACTION</p> <p>We will organise a Mass during Creation Time for our local community. All Tutor groups will create a piece of artwork to reflect Laudato Si' that will be displayed at the Mass. Art work may be produced using recycled items or items that would have ended up in landfill.</p> <p>Faith Input:</p> <p>Solidarity - working with our local community with a focus on the whole world living simply and sustainably.</p> <p>Serving others through ministry in the mass and refreshments afterwards.</p> <p>Education input:</p> <p>Prayers and readings used in the mass will form the basis of collective worship during this time, so that all pupils have the opportunity to reflect on the theme of the Mass. Pupils will prepare resources for the mass.</p>	<p>Description of action:</p> <p>We will hold a regular collection for our local foodbank. Pupils will liaise with the foodbank to see what their 'most needed' items are and will assist in sorting the items (eg checking the dates, as advised by the foodbank) and taking them to the foodbank.</p> <p>Faith Input:</p> <p>Catholic Social Teaching - preferential option for the poor, solidarity, human dignity.</p> <p>https://cafod.org.uk/Education/Secondary-and-youth-resources/CST-resources-young-people</p> <p>Scripture: Matthew 25:35 (I was hungry and you gave me something to eat)</p> <p>Education input:</p> <p>We will ask a volunteer from the foodbank to visit the students to share more about the work of the foodbank</p>	<p>Description of action:</p> <p>We will work with the Chorley Buddies Food Club</p> <p>Faith Input:</p> <p>Helping the poor, feeding the hungry, welcoming the stranger</p> <p>Sustainability - reducing food waste</p> <p>Solidarity</p> <p>Education input:</p> <p>Pupils involved in the project can produce a display explaining the rationale behind the scheme and how it works</p>

SCHOOL	<p>Description of action: We will introduce meat free Mondays to reduce our consumption of meat based products in school and to help pupils and staff see that tasty, healthy eating doesn't have to be meat-based.</p> <p>Faith Input: Sustainability, stewardship - protecting the earth for future generations by reducing our carbon footprint</p> <p>Education input: Assembly</p>	<p>Description of action:</p> <p>MAIN ACTION</p> <p>We will create a prayer labyrinth with prayer stations based on Laudato si.</p> <p>We will share information and images about the process of creating the labyrinth with our faith partners (schools and parishes).</p> <p>We will make the labyrinth available to other groups (eg transition pupils) using our school.</p> <p>Faith Input: Catholic Social Teaching - Stewardship and care for the earth, the Common Good, Human Dignity, Solidarity. Laudato Si https://www.vatican.va/content/francesco/en/encyclicals/documents/papa_francesco_20150524_enciclica-laudato-si.html</p> <p>Education input: Pupils will have access to CAFOD's liturgical prayer and to resources for other faiths represented within our school. tps://cafod.org.uk/Education/Secondary-and youth resources/Secondary-liturgical-prayer We will use the labyrinth to show people in our local community the different ways we can pray and to highlight to them the issues raised in Laudato si. Prayer helps us to grow in our relationship with God and to increase in wisdom and discernment.</p>	<p>Description of action: We will use the raised beds and the land-based programme to grow vegetables which can either be sold to staff to fund further crops, or donated to food clubs</p> <p>Faith Input: Laudato Si' Sustainability</p> <p>Education input: Link to the issues faced in less developed countries where access to fertile soil, seed and water for irrigation are not as freely available. https://cafod.org.uk/campaign/fix-the-food-system</p>
--------	---	--	--

LiveSimply

Criteria for live simply: To take action towards living a simpler lifestyle including slowing down and finding time to pray and reflect, refusing and reducing on what we consume, spending more time on the simpler things in life including reflective time with family and friends, time in nature.

Brief description of main action:

We will create a prayer labyrinth with prayer stations based on Laudato si'. This will enable us to spend time in quiet reflection and to think about our impact on the world. The labyrinth will be available to all our pupils and will be a useful resource for RE lessons, for Faith in Action reflections and for retreat days and Personal Development sessions.

How will you plan for a wider community engagement?

We will share information and images about the process of creating the labyrinth with our faith partners (schools and parishes).

We will make the labyrinth available to other groups (eg transition pupils) using our school.

We will host a gathering of the Archdiocesan School Chaplains and use the labyrinth as a focus for prayer.

FAITH | LEARN | ACT

What faith-based resources will you use?

Include resources linked to Catholic Social Teaching, liturgies, prayers and other faith based materials.

Catholic Social Teaching principles of stewardship and care for the earth, the common good, human dignity, solidarity.

Laudato Si (https://www.vatican.va/content/francesco/en/encyclicals/documents/papa_francesco_20150524_enciclica-laudato-si.html)

<https://cafod.org.uk/education/laudato-si-for-schools>

What educational resources will you use?

These can include CAFOD educational resources, or other resources that provide a learning journey.

For practical information on how to construct a labyrinth:

<https://www.youtube.com/watch?v=nKEvP-vA4P0>

For guidance on how to pray using a labyrinth:

<https://beingbenedictine.com/2017/06/27/many-ways-to-prayer-walking-a-labyrinth/>

We will use a variety of printed and electronic resources to devise appropriate prayer stations and to write guidance notes for those using the labyrinth and we will use a model of 'reflect-pray-change' to encourage participants to make a difference to the world.

Live Sustainably

Criteria for live sustainably: To take action towards protecting God's creation through personal actions. This can include taking action on how much we use and throw away, supporting the work of eco clubs and other eco initiatives, taking environmentally positive action in the local community.

Brief description of main action:

We will organise a Mass during Creation Time (1 September - 4 October) for our local community. All Tutor groups will create a piece of artwork to reflect Laudato Si' and our call to be stewards of creation. The artwork will be displayed at the Mass. Art work may be produced using recycled items or items that would have ended up in landfill.

How will you plan for a wider community engagement?

The mass will be for the whole of our community, across all the Catholic parishes of Chorley and involving all the Catholic primary schools. It will take place at a time when most people will be able to attend. We will work with Live Simply practitioners in the parishes. We will ask all the primary schools to produce work to be included in display at the mass. We will try to arrange local press coverage and encourage parishes and schools to include a report and photographs of the mass in their newsletters, so make sure the wider community is aware of what has happened and why.

FAITH | LEARN | ACT

What faith-based resources will you use?

Include resources linked to Catholic Social Teaching, liturgies, prayers and other faith based materials.

Resources for prayer during creation time from CTBI (<https://ctbi.org.uk/season-of-creation-2022/> - updates for 2023) and from CAFOD.

Readings from the Lectionary for Masses with Children.

Hymns and music appropriate to the theme.

Artwork from local schools to be included in displays.

What educational resources will you use?

These can include CAFOD educational resources, or other resources that provide a learning journey.

Prayers and readings used in the mass will form the basis of collective worship during this time, so that all pupils have the opportunity to reflect on the theme of the Mass. Pupils will prepare resources for the mass.

Live in Solidarity

Criteria for live in solidarity: To take direct action to help our global family. This includes campaign action to raise awareness or challenge structures that impact negatively on our global neighbours, fundraising to help communities in need, and other global actions that make a difference to our global family.

Brief description of main action:

A campaign to support Mary's Meals which we will encourage the faith community across Chorley to be involved with.

How will you plan for a wider community engagement?

We will invite a speaker from Mary's Meals to come into school and try to arrange for them to also visit our local primary schools. We will also contact our local churches and ask them to support the campaign, by having a speaker at mass, and/or including an appeal on their newsletters. Pupils would be instrumental in contacting our faith partners and in making sure that parishes and primary schools are aware of the work of Mary's Meals and they can also put together a plan for coordinating collections. Mary's Meals prayer resources could be incorporated into bidding prayers at Mass and links to their prayers could be added to newsletters, especially where these are electronic.

FAITH | LEARN | ACT

What faith-based resources will you use?

Include resources linked to Catholic Social Teaching, liturgies, prayers and other faith based materials.

Scripture link: the parable of the sheep and goats

Catholic Social Teaching – the preferential option for the poor, solidarity, human dignity.

Prayer resources from Mary's Meals (<https://www.marysmeals.org.uk/get-involved/churches-and-prayers>).

We will link the work of Mary's Meals to the reflection points for our Faith in Action group.

We will link the aims and actions to the work of our Faith in Action group. Our Bible Group will look at the links between the work of Mary's Meals and scripture, both Old and New Testament.

What educational resources will you use?

These can include CAFOD educational resources, or other resources that provide a learning journey.

We will invite Mary's Meals to come into school and we will also contact other Catholic schools and parishes to encourage them to do the same - then we could have a town-wide collection.

Resources from the Mary's Meals website.

To register for the **LiveSimply** award, please fill out the form below, and send in your completed action plan to the address below. Upon receipt of your registration we will send you a registration certificate for you to display in your school.

Name of School

HOLY CROSS CATHOLIC HIGH SCHOOL

Address

MYLES STANDISH WAY, CHORLEY PR7 3LS

Headteacher

IVAN GAUGHAN

Contact Name

LINDA WALMSLEY

Email Address

l.walmsley@holycross.lancs.sch.uk

Date

Please email a copy of your plan to schools@cafod.org.uk

**CAFOD Education team,
Romero House,
55 Westminster Bridge Road,
London SE1 7JB.**

☒ Yes, I would like to join an email list for the **LiveSimply** award where I will receive updates, ideas, links to action and further support.

CAFOD will process information you provide to us on this form for the purposes of sending you resources for the LiveSimply Award. CAFOD will keep some personal details about you on our database so we can stay in contact with you enabling us to administer and manage the LiveSimply award efficiently.

You can change your communication preferences at any time by contacting us at cafod@cafod.org.uk or 0303 303 3030.

CAFOD will never share your data for marketing. For details, see our privacy statement on www.cafod.org.uk/privacy